

[FAQ]

The live view of GV-LPR 10R v1.2 is just too dark

Release Date: 7/09/2015

Applied to:

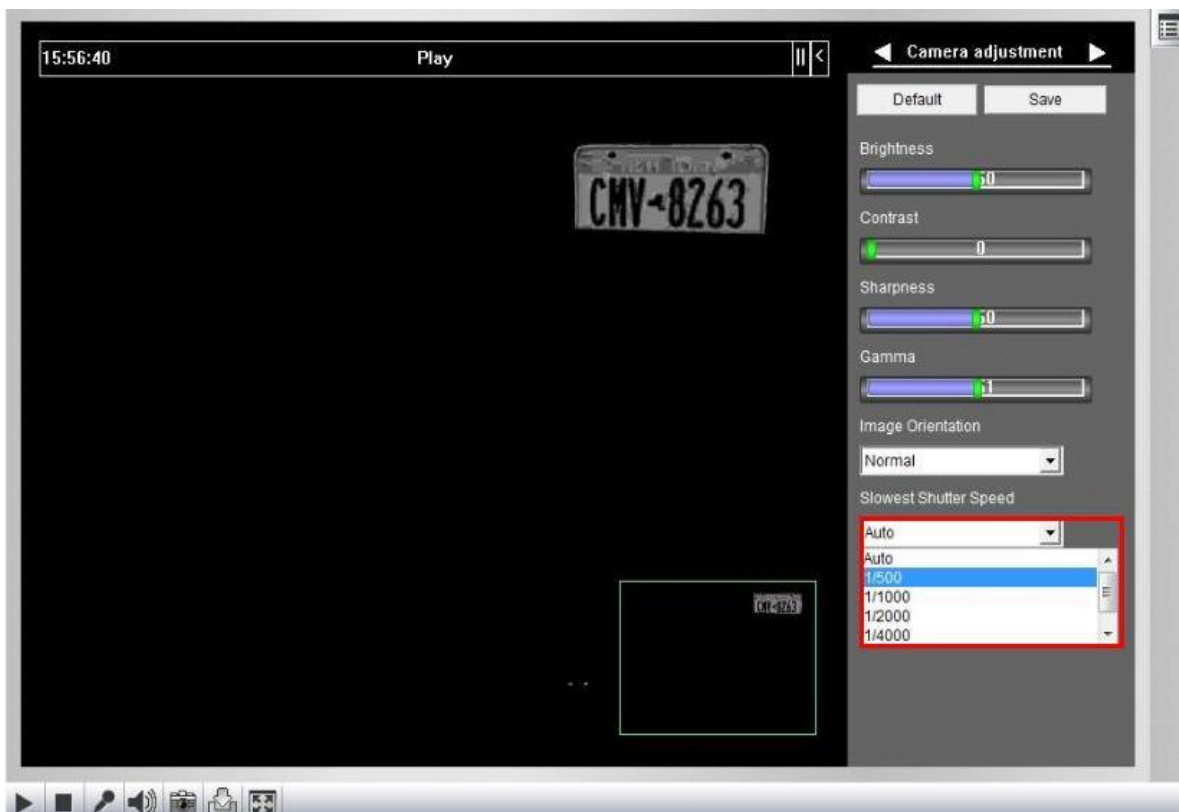
GV-LPR 10 v1.2

Question:

What should we do if the live view of GV-LPR v1.2 is too dark?

Answer:

Please go change the shutter speed of the camera to “1/500” as shown below.



For your information: A camera's shutter determines when the camera sensor will be open or closed to incoming light from the camera lens. The shutter speed specifically refers to how long this light is permitted to enter the camera. Slower shutter speeds are used with less light

so that light can enter the camera and illuminate the image.

For any question on the information provided, please feel free to submit your question to our support window at support@geovision.com.tw